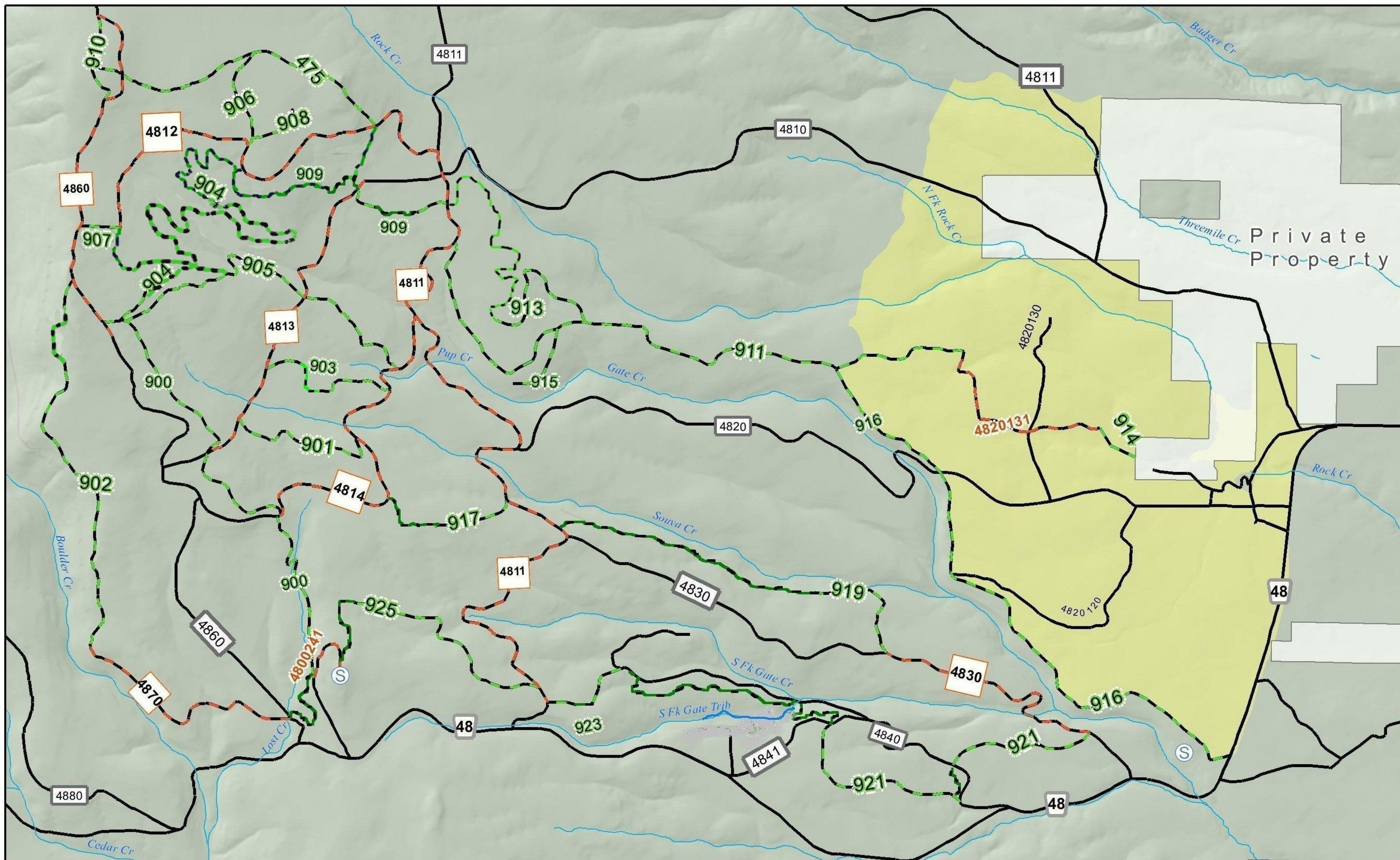


Mt. Hood National Forest Rock Creek Designated Off Highway Vehicle (OHV) Routes



- Mixed-Use Road Open to ATV Class I, III
 - Trails Open to ATV Class I, III
 - Roads Open to Highway Legal Vehicles Only
 - OHV Staging Area
 - Overnight Camping and Campfires Prohibited
 - Mt. Hood National Forest
- Note: Map Shows Existing Designated OHV Routes Only

0 0.5 1

Miles

The Forest Service cannot assure the reliability or suitability of this information for a particular purpose. The data and product accuracy may vary and may be updated, corrected, or otherwise modified without notification. For more information contact:

Mt. Hood National Forest, 16400 Champion Way, Sandy, OR 97055
(503) 668-1700

The USDA is an equal opportunity provider and employer.

Printed on Recycled Paper

Mt. Hood National Forest