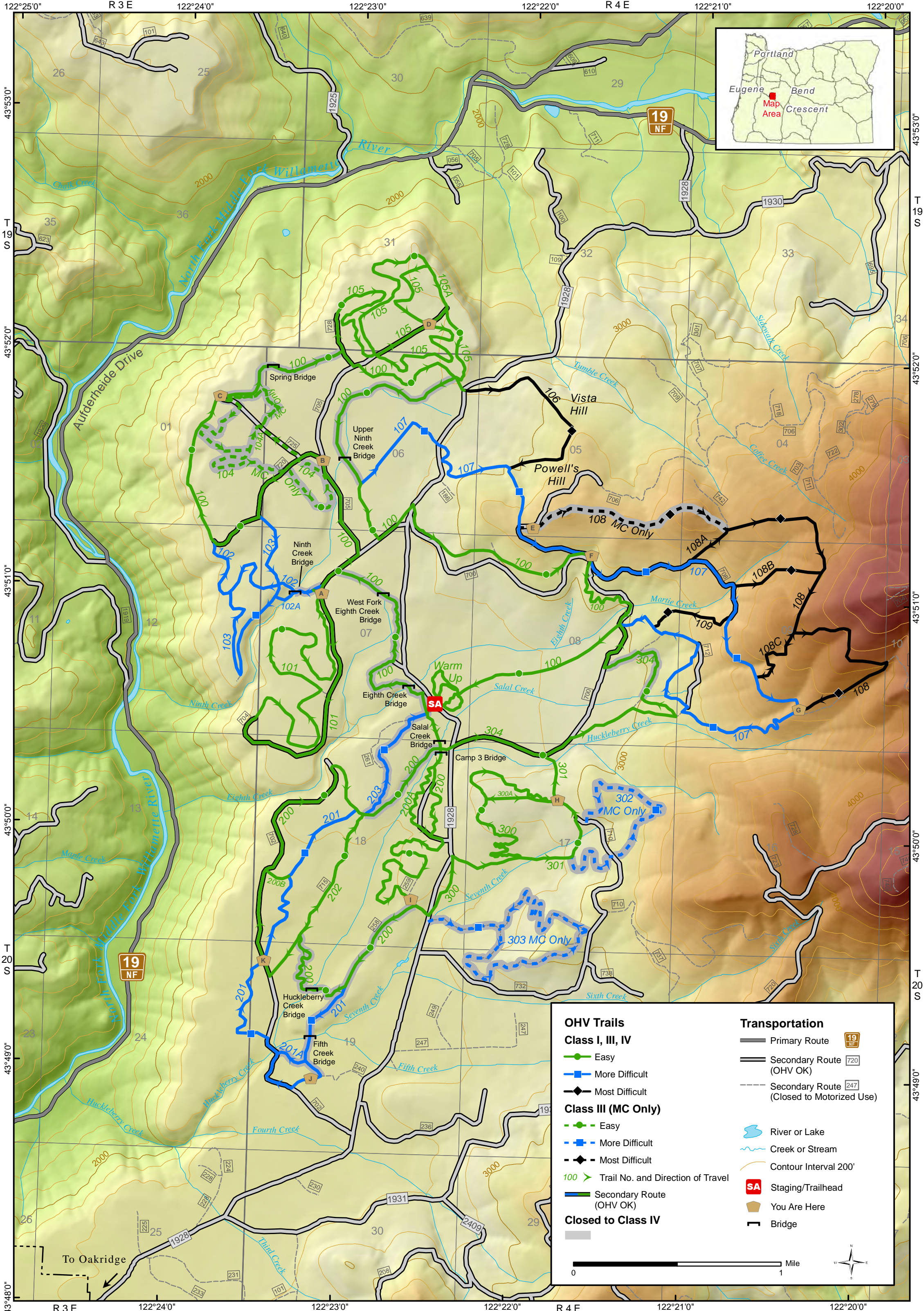




# HUCKLEBERRY FLATS MOTORIZED TRAIL SYSTEM

## WILLAMETTE NATIONAL FOREST MIDDLE FORK RANGER DISTRICT



OHV Trails		Transportation	
<b>Class I, III, IV</b>		Primary Route	
	Easy	Secondary Route (OHV OK)	
	More Difficult	Secondary Route (Closed to Motorized Use)	
	Most Difficult	River or Lake	
<b>Class III (MC Only)</b>		Creek or Stream	
	Easy	Contour Interval 200'	
	More Difficult	Staging/Trailhead	
	Most Difficult	You Are Here	
	Trail No. and Direction of Travel	Bridge	
	Secondary Route (OHV OK)	<b>Closed to Class IV</b> 	

Scale: 0 to 1 Mile

Compass rose